

PARTITION PLAT NO. _____
 INSTRUMENT NO. _____
 PARCEL 1 OF PARTITION PLAT 2008-026,
 IN THE SE 1/4 OF SECTION 25 & IN
 THE NE 1/4 OF SECTION 36,
 T8N, R6W, W.M. CLATSOP COUNTY, OREGON
 MARCH 8, 2024

MONUMENT NOTES:

- [5] NORTHEAST CORNER PARCEL 1, PARTITION PLAT 2008-26
FOUND A 5/8" IRON ROD WITH A Y.P.C.. MARKED "K.L.S. SURVEYING INC. PER CS NO. 11,708 (HELD)
- [6] FOUND A 5/8" IRON ROD WITH A Y.P.C.. MARKED "K.L.S. SURVEYING INC. PER CS NO. 11,708 (HELD)
- [7] FOUND A 5/8" IRON ROD WITH A Y.P.C.. MARKED "K.L.S. SURVEYING INC. PER CS NO. 12,127 (HELD)
- [13] FOUND A 5/8" IRON ROD WITH A Y.P.C.. MARKED "K.L.S. SURVEYING INC. PER CS NO. 12,127 (HELD)
- [172] NORTHEAST CORNER LOT 9, BLOCK 3, RIVER RANCH
FOUND A 5/8" IRON ROD, PER RIVER RANCH (HELD)
- [173] SOUTHEAST CORNER LOT 9, BLOCK 2, RIVER RANCH
FOUND A 5/8" IRON ROD, PER RIVER RANCH (HELD)
- [174] NORTHEAST CORNER LOT 9, BLOCK 2, RIVER RANCH
FOUND A 5/8" IRON ROD, PER RIVER RANCH (HELD)
- [175] SOUTHEASTERLY CORNER LOT 9, BLOCK 3, RIVER RANCH
FOUND A 5/8" IRON ROD, PER RIVER RANCH (HELD)
- [213] SOUTHEAST CORNER LOT 12, BLOCK 3
FOUND A 5/8" IRON ROD, PER RIVER RANCH (HELD)
- [215] FOUND A 5/8" IRON ROD DOWN 4", PER RIVER RANCH (HELD)
- [216] FOUND A 5/8" IRON ROD, PER RIVER RANCH (HELD)
- [220] FOUND A 5/8" IRON ROD DOWN 16", PER RIVER RANCH (HELD)
- [222] FOUND A 5/8" IRON ROD, PER RIVER RANCH (HELD)
- [1003] ANGLE POINT EAST LINE OF LOT 10, BLOCK 3, RIVER RANCH
FOUND A 5/8" IRON ROD PER RIVER RANCH (HELD)
- [1004] NORTHEAST CORNER LOT 11, BLOCK 3, RIVER RANCH
FOUND A 5/8" IRON ROD, PER RIVER RANCH (HELD)
- [1005] SOUTHEAST CORNER LOT 11, BLOCK 3, RIVER RANCH
FOUND A 5/8" IRON ROD, PER RIVER RANCH (HELD)

REFERENCES:

- 1 = PLAT OF RIVER RANCH BOOK 11, PAGE 39-40
- 2 = CS NO. B-4882
- 3 = CS NO. B-7262
- 4 = CS NO. 9627
- 5 = CS NO. 11,708
- 6 = CS NO. 12,127
- 7 = GLO SURVEY BY TRUTCH & TRUTCH DECEMBER 30TH 1856 CONTRACT NO. 62
- 8 = PARTITION PLAT 2008-026
- 9 = M-117 COLUMBIA COUNTY

I DONALD D. WALLACE JR. PROFESSIONAL LAND SURVEYOR, HEREBY CERTIFY THAT THIS COPY IS A TRUE AND EXACT DUPLICATE OF THE ORIGINAL PLAT.

DONALD. D WALLACE JR.

I HEREBY CERTIFY THAT THIS COPY IS A TRUE AND EXACT DUPLICATE OF THE ORIGINAL PLAT.

CLATSOP COUNTY CLERK

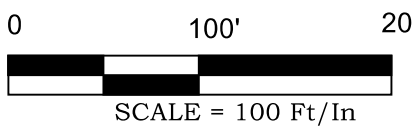
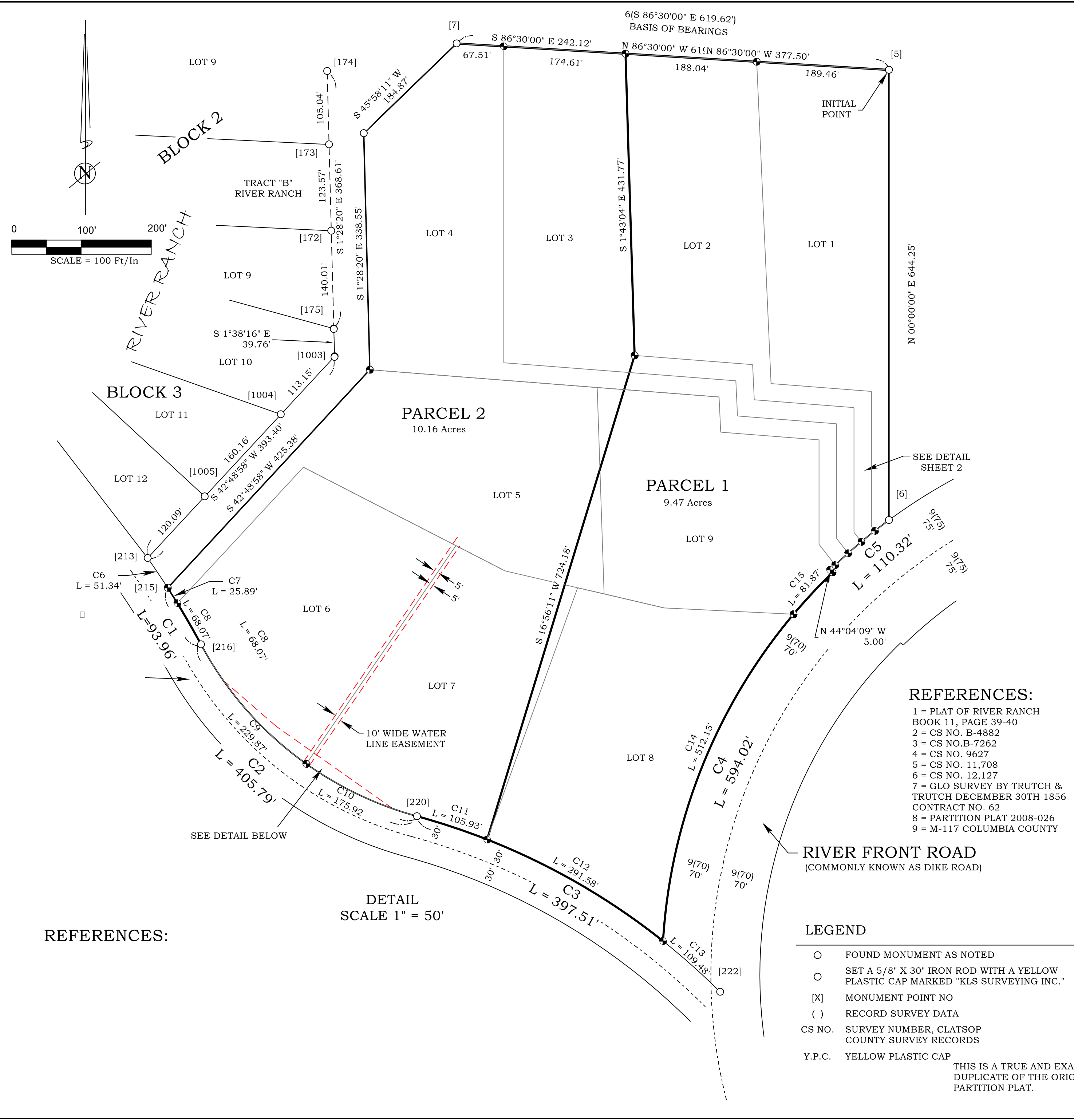
REGISTERED PROFESSIONAL LAND SURVEYOR

PRELIMINARY

OREGON
 JANUARY 19, 1993
 DONALD D WALLACE, JR
 2601
 RENEWS 6/30/26

K.L.S. SURVEYING INC.
 1224 ALDER STREET
 VERNONIA, OREGON 97064
 (503) 429-6115

SHEET 1 OF 4	
JOB No. 12-013	
DRAWING NAME: 12-013 PP S1	
DRAWN BY: DDW	
FIELD: SWMJR/BTD	
EQUIPMENT:GTS300/HIPER	
REVISED: 7-30-2024	



REFERENCES:

LEGEND

- FOUND MONUMENT AS NOTED
- SET A 5/8" X 30" IRON ROD WITH A YELLOW PLASTIC CAP MARKED "KLS SURVEYING INC."
- [X] MONUMENT POINT NO
- () RECORD SURVEY DATA
- CS NO. SURVEY NUMBER, CLATSOP COUNTY SURVEY RECORDS
- Y.P.C. YELLOW PLASTIC CAP

THIS IS A TRUE AND EXACT DUPLICATE OF THE ORIGINAL PARTITION PLAT.